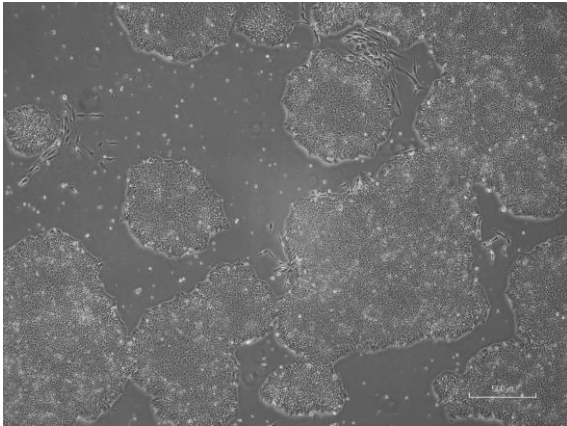
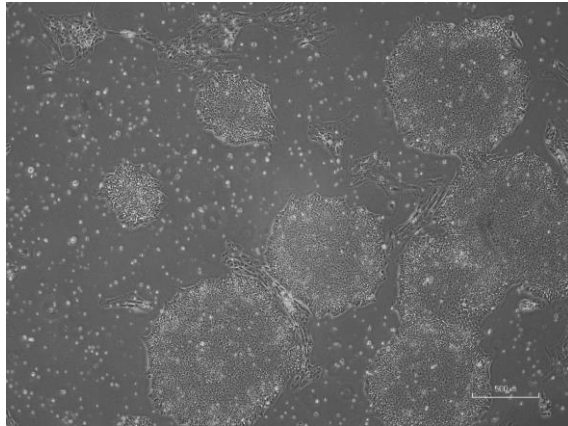


【 CiRA-jk-0108 】 Morphology of iPSC colonies

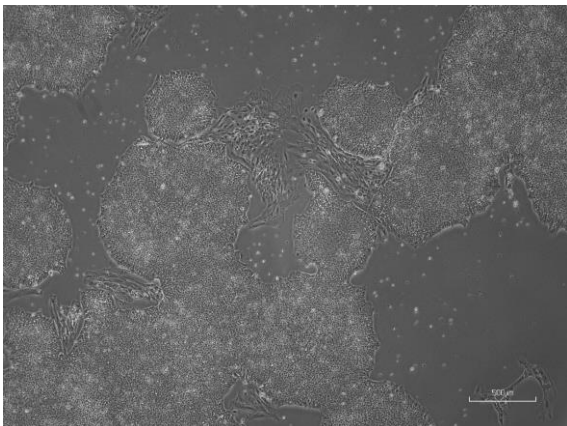
CiRA-jk-0108-A: passage-3



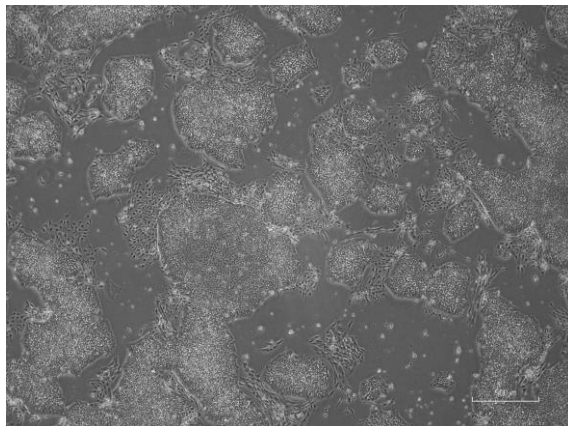
CiRA -jk-0108-B: passage-3



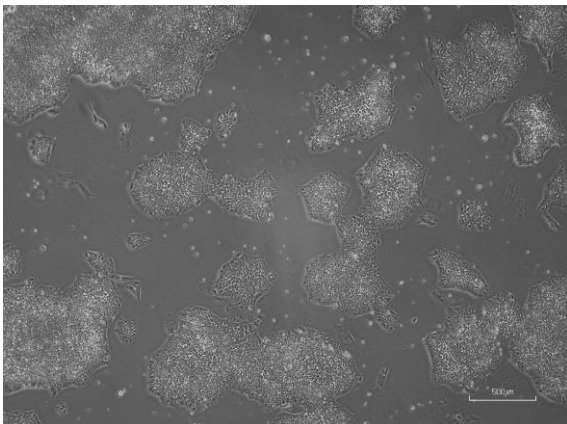
CiRA -jk-0108-C: passage-3



CiRA -jk-0108-D: passage-4



CiRA -jk-0108-E: passage-4



(All images were captured at 4x magnification)